

## HEALTH CARE IN BELARUS

– a high-quality, skilled, prompt and accessible medical assistance.

☞ Belarus offers medical treatment in a number of modern state clinics equipped with high-tech medical equipment;

☞ Highly professional specialists constantly improving their skills are employed in the medical institutions of Belarus;

☞ Medical centers of Belarus guarantee high quality and reasonable cost of medical services.



For foreign patients  
medical centers of Belarus  
offer prophylaxis, diagnosis and effective  
treatment of adults and children in the  
following areas:

☞ traumatology and orthopedics.....	1
☞ neurology and neurosurgery .....	2
☞ cardiology .....	3
☞ balneotherapy .....	4
☞ pulmonology and phthisiology .....	5
☞ speleotreatment.....	6
☞ pediatric oncology .....	7
☞ oncology .....	8
☞ psychiatry .....	9
☞ combined treatment .....	10
☞ otorhinolaryngology .....	11
☞ stomatology .....	12
☞ rehabilitation .....	13-14
☞ obstetrics and gynecology .....	15-16



Kizhevatova str., 60/4,  
Minsk, 220024,  
Republic of Belarus,  
Tel.: + 375 17 279 78 03  
E-mail: niito@tut.by  
[www.ortoped.by](http://www.ortoped.by)

## State institution «Republican Scientific and Practical Center of Traumatology and Orthopedics»

Republican scientific and practical center of traumatology and orthopedics has an 80-year experience of successful work in the field of diagnostics and treatment of motor-supporting apparatus disorders. The centre is a leading medical institution providing highly qualified trauma and orthopedic care in the Republic of Belarus.

The Center departments provide a full range of advanced medical services and methods of treatment based on the latest scientific developments in the field of traumatology, orthopedics, neurosurgery - starting with the identification of pathology, diagnosis, surgery ending with a course of restorative treatment.

Total hip and knee joint endoprosthesis replacement, including revisory surgery - 5000 - 7000 USD;

☞ Diagnosis and treatment of disorders of major joints by means of arthroscopy - 600 - 800 USD;

☞ Reconstructive surgery on knee ligaments - 1200 - 1300 USD;

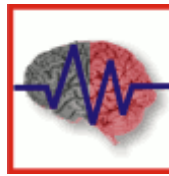
☞ Reconstructive surgery to children and adults with the hip joint pathology - 2 000 - 2 500 USD;

☞ Spinal injuries and diseases surgery – 1 500 – 1 700 USD, Spinal neoplasm surgery – from 2 500 USD;

☞ Surgery of Spinal scoliosis deformity–10 000 USD;

☞ Osteosynthesis of bone fractures – 1 000 – 3 000 USD.

1.



Skoriny str. 24,  
Minsk, 220114,  
Republic of Belarus,  
Tel.: +375 (017) 267 12 40  
E-mail: ninh@mail.ru  
[www.neuro.by](http://www.neuro.by)

## State institution «Republican Scientific and Practical Center of Neurology and Neurosurgery»



☞ Consultations by neurologists and neurosurgeons of higher qualification - from 65 USD;

☞ Ultrasound diagnostics – from 65 USD;

☞ Electroneuromyography – from 65 USD;

☞ Dystonia treatment with botulotoxin titoxin – from 65 USD;

(excluding the cost of medications)

☞ Therapeutic plasmapheresis - from 1040 USD;

☞ Intravenous и extra venous laser therapy – from 65 USD;

☞ Acupuncture – from 65 USD;

☞ Manual therapy – from 130 USD;

☞ Exercise therapy and massage – from 130 USD;

☞ Vibrational training with the use of stabilometric platform in case of coordination disorders – from 130 USD;

☞ Determination of hormones by immunoenzyme method – from 65 USD.

2.



Rose Luxemburg str., 110,  
Minsk, 220036,  
Republic of Belarus,  
Tel.: (+375 17) 207-39-56  
(+375 33) 350 98 44  
Skype: del\_franco  
E-mail: ovbd@cardio.by  
[www.cardio.by/](http://www.cardio.by/)

## State institution «Republican Scientific and Practical Center "Cardiology"»



- ☞ Aortic Coronary By-pass Surgery 7 000 – 9 000 USD;
- ☞ Prosthesis (plasty) of aortal, mitral, tricuspid valves 8 000 – 10 000 USD;
- ☞ Coronary (peripheral) artery stenting 2 000 – 3 500 USD;
- ☞ Pacemaker implantation 2 000 – 3 500 USD;
- ☞ Ectopic Lesion Radio frequency ablation 4 000 – 6 000 USD;
- ☞ Cardiovascular system examination in the cardiological department 200 – 400 USD.

3.



Makaenka str., 17,  
Minsk,  
Republic of Belarus,  
Tel.: + 375 17 267 65 10  
dispanser@mail.belpak.by  
[www.makaenka17med.by](http://www.makaenka17med.by)

## State institution «The Republican Center of Medical Rehabilitation and Balneotherapy»

One day programs:

- ☞ **The complex diagnosis and treatment of osteoporosis** – from 30 USD;
- ☞ **The complex diagnosis of thyroid diseases** – from 65 USD;
- ☞ **The complex diagnosis of heart disease** – from 90 USD;
- ☞ **The program of early diagnosis of complications of diabetes** – from 130 USD;



- ☞ **The program of early diagnosis of gynecological diseases of tumor nature in** – from 85 USD;
- ☞ **The program of early diagnosis of urological diseases of tumor nature** – from 80 USD;
- ☞ **The program of early diagnosis of the stomach and intestines diseases of tumor nature** – from 90 USD.

4.



Dolginovsky tr-t, 157,  
Minsk, 220053,  
Republic of Belarus,  
Tel.: +37517-289-83-52  
fax: +37517-289-89-50,  
E-mail: niipulm@tut.by

<http://www.rnpepf.by/>

## State institution «Republican Scientific and Practical Center of Pulmonology and Phthisiology»



- ☞ Pleuropneumonectomy – 600 USD;
- ☞ Plasty of the pelvic-ureteral segment– 215 USD;
- ☞ Kidney ablation surgery – 150 USD;
- ☞ Ultrasound examination of thoracic and abdominal cavity – 95 USD;
- ☞ Computer tomography of chest organs, with special image processing techniques – 60 USD;
- ☞ Integrated study of respiratory function and hemodynamics of the pulmonary circulation – 110 USD;
- ☞ DNA detection of infectious and parasitic diseases through genetic diagnosis – 30 USD;
- ☞ Microbiological detection of TB using accelerated methods and automated systems – 58 USD.



Lesnoy proyezd, 3  
Minsk region,  
Soligorsk, 223710,  
Republic of Belarus,  
Tel.: +375 174 23 73 40  
+375 174 23 81 74  
E-mail: speleo.by@gmail.com

[www.speleo.by](http://www.speleo.by)

## State institution «Republican Clinic of Speleotherapy»

Medical profile of the Institution: Bronchial asthma, all variants of light and average course in a remission period, respiratory insufficiency not higher than 1st degree; Chronic Obstructive Disease of Lungs of light and average course in a remission period, respiratory insufficiency not higher than 1st degree; Chronic bronchitis in a remission period, respiratory insufficiency not higher than 1st degree; Pollinoses (before the season of acute condition and in the season of acute condition), other allergic rhinitis, allergic urticaria.

The uniqueness of the subsurface speleocomplex:

- ☞ The combination of halite and sylvinite layer scientifically proved optimal system of ventilation.
  - ☞ Qualified personnel, job experience is more than 20 years.
  - ☞ a wide range of physiotherapy (electrotherapy, water therapy, massage, spa procedures), sauna and swimming pool allow to reach effectiveness of treatment up to 97%.
- Treatment, accommodation and nourishment for 1 person.
- ☞ a standard double room for 1 day – 45 USD;
  - ☞ a standard single room for 1 day – 54 USD;
  - ☞ 2 rooms of enhanced comfort for one person for 1 day – 59 USD;
  - ☞ 2 rooms of enhanced comfort for 2 persons for 1 day– 79 USD.





Frunzenskaya str., 43  
pos.Lesnoe-2,  
Minsk region, 223040,  
Republic of Belarus,  
Tel.: +375 17 265 42 22  
+375 17 265 25 17  
[www.oncology.by](http://www.oncology.by)

## State institution «Belarusian Research Center for Pediatric Oncology Hematology and Immunology»

The center performs transplantations of hematopoietic (bone marrow, peripheral and cord blood) and mesenchymal stem cells, grown in vitro.

The cost of transplantations varies from 50 000 USD to 180 000 USD (including preparation, transplantation itself and nursing after transplantation).



The center operates bank cord blood cells. The cost of harvesting and storage of cord blood cells - the first year 2000 USD and 110 USD each year thereafter.

In our work we keep to international standards of medical care, combining them with traditional domestic medical care and attention to the patient, all the experience, technical capabilities, as well as a deep understanding of the situation in each case.

7.



Lesnoy, 223040,  
Minsk District, 223040,  
Republic of Belarus,  
Tel: +375 17 265-34-10;  
+375 17 268-31-93  
E-mail: [oncobel@omr.med.by](mailto:oncobel@omr.med.by),  
[www.omr.med.by](http://www.omr.med.by)

## N.N. Alexandrov National Cancer Center

Leading oncology center of Belarus. The specialists of the center master all the most effective and worldwide applicable methods of surgical, radiation, chemotherapeutic, combined and complex treatment of all forms and localizations of malignant tumors in adults.

In 2009, the Center was given an award "European quality" by the Nomination Committee of the European Business Assembly. N.N. Alexandrov National Cancer Centre – guarantee of professionalism, reliability and quality.

- ☞ Gastric and duodenal surgery, pancreas, liver, biliary tract surgery 800 – 3000 USD;
- ☞ Surgery for lung and thoracic organs diseases 300 – 2200 USD;
- ☞ Otolaryngeal surgery 300 – 1200 USD;
- ☞ Urologic surgery 500 – 1800 USD;
- ☞ Proctologic surgery 600 – 2000 USD;
- ☞ Gynecologic surgery 200 – 1700 USD;
- ☞ Reconstructive and plastic surgery from 450 to 1300 USD;
- ☞ Neurosurgery 500 – 1250 USD;
- ☞ Radiotherapy 55 – 4300 USD per treatment;
- ☞ Hyperthermia and photodynamic therapy 50 – 300 USD per treatment;
- ☞ A course of chemotherapy 80 – 270 USD.

8.



Dolginosky tr. 152,  
Minsk, 220053,  
Republic of Belarus,  
Tel.: +375 17 385 90 27  
+375 17 289 80 48  
E-mail: rkp@mail.belpak.by  
[www.mentalhealth.by](http://www.mentalhealth.by)

## State Institution «Republican Scientific and Practical Center of Mental Health»

Republican Scientific and Practical Center of Mental Health is the leading Republican organization in the market of medical services for mental health, and which provides highly qualified staff.

Consultations of specialists: psychiatrists, narcologists, psychotherapists – from 18 USD.

Methods of diagnosis involving modern equipment:

- ☞ Radiodiagnosis from 5 USD;
- ☞ Ultrasonic diagnosis from 10 USD;
- ☞ Functional diagnosis from 10 USD.

Inpatient treatment of mental and behavioral disorders with the use of modern methods and medications – from 35 USD a day.

☞ “Kovcheg” rehabilitation program for addiction patients (12 days) – from 430 USD.

Anonymous treatment of alcohol withdrawal syndrome:

- ☞ Implantation of medications («Esperal») from 76 USD;
- ☞ Detoxication – от 50 USD;

Laboratory tests: clinical, biochemical, hematological, immunological, bacteriological – from 4 USD

Physiotherapy services:

- ☞ Massage, hydrotherapy, balneotherapy, heat therapy, light therapy – from 5 USD;
- ☞ Barotherapy – from 12 USD;

Health and social care of elderly patients – from 35 USD a day.

Ilycha str., 290  
246040, Gomel,  
Republic of Belarus  
Tel.: +375 232 378092,  
fax: +375 232 378097,  
E-mail: rcrm@tut.by,  
[www.rcrm.by](http://www.rcrm.by)

## State institution «Republican Scientific and Practical Center of Radiation Medicine and Human Ecology»

- ☞ Therapeutic courses (examination, rehabilitation,
- ☞ Hospital accommodation, nutrition 3 times a day)  
10 days – 700 USD;
- ☞ A complex of diagnostic services (for women, men)  
3 days – 900 USD;
- ☞ Gynecological – 400 – 1100 USD;
- ☞ ophthalmological surgery – 450 USD;
- ☞ Treatment in the Department of immunopathology and Allergology– 400 USD;
- ☞ Dentistry
  - ✓ Metal-ceramics crown – 72 USD;
  - ✓ Whole ceramic crown – 255 USD;
  - ✓ Clasp dental removable prosthesis with clasp fixation – 242 USD;
  - ✓ Clasp dental removable prosthesis with attachments - 424 USD;
  - ✓ Installing a titanium screw dental implant – 250 USD;
  - ✓ Making an artificial restorative crown (metal-ceramic) with support on the implant – 250 USD;
- ☞ Plastic surgery – 400 – 2000 USD;
- ☞ Courses of polychemotherapy in case of multiple myeloma– 250 – 550 USD;
- ☞ Courses of chemotherapy for the treatment of chronic lymphocytic leukemia (basic therapy with no infectious complications) – 2000 USD;
- ☞ Diagnosis and treatment with the stay in a hematology department for children – 100–10000 USD.





Suhaya str. 8  
Minsk, 220004,  
Republic of Belarus  
Tel.: +375 17 200 84 50, 200 85 24  
E-mail: rnpc@lor.by  
[www. Lor.by](http://www.Lor.by)

## State Institution «Republican Scientific and Practical Center of Otorhinolaryngology»

The Center conducts a complete range of ENT research. Develops new methods of detecting hearing disorders in the early stages, new approaches to their early correction, treatment and rehabilitation. Implements modern medical technologies, efficient methods of surgical treatment of otorhinolaryngological diseases.

The Center performs a complete range of otolaryngological surgical interventions, including highly technological ones:

microsurgical operations on the middle and inner ear: cochlear implantation, bone implantation with BAHA-system, middle ear implantation with Vibrant-system, all types of tympanoplasty, including reconstruction of the middle ear sound-conducting apparatus with titanium total, partial and angular;

video-endoscopic interventions in nasal cavity and paranasal;

reconstructive surgery on the larynx and trachea with the restoration of phonation and respiratory function;

operations on the pharynx with a videoendoscopic control: adenotomy, tonsillotomy, tonsillectomy;

plastic surgery: rhinoplasty, otoplasty, including the restoration of auricles with silicone prostheses, uvulopalatopharyngoplasty (surgical treatment of snoring).

11.

ул. Sukhaya str., 28,  
Minsk,  
Republic of Belarus,  
Tel.: +375 17 200 74 17  
+375 17 200 50 46  
[www.belstom.by](http://www.belstom.by)

## State Institution «Republican Dental Clinic»

The Clinic is a unique health care institution of a dental profile.



- ☞ efficient dental disease prevention including fluoridation;
- ☞ providing professional dental hygiene– 150 USD;
- ☞ teeth whitening - 110 USD;
- ☞ cosmetic restoration of teeth 85-100 USD;
- ☞ computer restoration on unit Cerec 3D – 150 USD;
- ☞ все виды протезирования;
- ☞ Periodontology, treatment of periodontal tissue diseases by using the apparatus «Vector» - 1 tooth – 10 \$ USD;;
- ☞ surgery: tooth extraction - 60-80 USD;\$;
- ☞ implantology– от 500 USD;
- ☞ orthodontic treatment with multibonding system – отfrom 1100 USD.

12.



Settlement Gorodische, 223027,  
Minsk region,  
Republic of Belarus,  
Tel.: +375 17 507-03-93,  
Fax: +375 17 507-03-99  
E-mail: niimser@belcmt.by, ontimr@mail.ru  
[www.gorodische.by](http://www.gorodische.by)

## State institution «Republican Scientific and Practical Centre of Medical Assessment and Rehabilitation»

Republican Scientific and Practical Centre of Medical Assessment and Rehabilitation is the only specialized institution in Belarus providing medical rehabilitation to patients after surgical treatment of malignant tumors of mamma, other feminine genital system organs and other neoplasms.



**1. Rehabilitation complex** (motor-supporting apparatus disorders, nervous system disorders, respiratory system disorders, cardiovascular system disorders and endocrinal system pathologies)  
*A course of medical rehabilitation of 12 days – 532 USD;*  
*A course of medical rehabilitation of 14 days – 624 USD.*

**2. A rehabilitation complex after neoplasm surgery:**  
*A course of medical rehabilitation of 12 days – 525 USD;*  
*A course of medical rehabilitation of 14 days – 615 USD.*



Aksakovschina village, 223032,  
Minsk region, 223032,  
Republic of Belarus,  
Tel.: 8 (017) 509-75-62; 8 (017) 509-72-42  
E-mail: gyrkbmr@aksakovschina.by  
[www.aksakovschina.by](http://www.aksakovschina.by)

## State Institution «Republican Clinical Hospital of Medical Rehabilitation»

Center offers patients a unique rehabilitation opportunities for:

- ☞ children with cardiovascular, orthopedic, traumatologic and neurological pathologies;
- ☞ patients with myocardial infarction;
- ☞ patients after neurosurgery and patients with cerebrovascular disorders;
- ☞ patients after heart and blood vessels reconstructive surgery;
- ☞ patients with orthopedic disorders and trauma;
- ☞ patients with spinal injury, spinal cord injury and pelvic organs dysfunction;

Restoration of impaired motor-supporting functions with the help of up-to-date high-tech rehabilitation devices::



- ☞ Training device “Lokomat” (robotized walking);
- ☞ Robotized system “Arneo”;
- ☞ Training device “Thera-vital”;
- ☞ Neuro-orthopedic costume «Atlant»;
- ☞ System “Andago” (Hocoma, Switzerland);
- ☞ Training device “Motomed letto 2” (Germany);
- Device – imitator of walking “Pio” (Germany).





Orlovskaya str., 66,  
Minsk, 220053,  
Republic of Belarus,  
Tel.: (8-017)233 62 15, (8-017)233 55 84;  
Tel/fax: (8-017)233 55 84;  
E-mail: sevenhos@mail.belpak.by  
[www.medcenter.by](http://www.medcenter.by)

## State institution "Republican Scientific and Practical Centre «Mother and Child»

Republican Scientific and Practical Centre «Mother and Child» provides medical care in all major specialties in the field of obstetrics and gynecology, pediatrics and medical genetics:

- ☞ diagnosis of hereditary and congenital pathologies, prognosis of the disease, the dynamic monitoring of families with identified pathology, determination of treatment tactics of some hereditary diseases with the use of computer diagnosis programs;
- ☞ specialized consultative and diagnostic care to women of reproductive age, consulting on family planning and in vitro fertilization (IVF, the estimated cost - 2400 USD);
- ☞ prenatal ultrasonic diagnosis I, II and III trimesters of pregnancy (prenatal ultrasonic diagnosis, echocardiography of foetus in different pregnancy periods, and colour Doppler examination of uteroplacental hemodynamics (20–60 USD);
- ☞ inpatient examination and treatment of pregnant patients, including those with extragenital diseases (average cost in hospital per day 50 USD);
- ☞ conservative and surgical treatment of gynecological disorders including laparoscopic methods (650–1 000 USD);

- ☞ reconstructive plastic surgery in case of uterus and vagina malformations (400 – 800 USD);
- ☞ simultaneous surgery in case of a combined pathology with the use of modern medical equipment (850–1 000 USD);
- ☞ Pregnancy Monitoring in Rh-alloimmunized pregnant women starting from 20 weeks of gestation ведение беременности с резус-сенсibilizацией, (about 1 462 USD);
- ☞ Delivery (natural and cesarean) (850 – 1 000 USD);
- ☞ laser coagulation of placental anastomoses in Twin-to-Twin Transfusion Syndrome; laser coagulation of umbilical cord in monochorionic twins with acardius, acranium; (about 1 560 USD);
- ☞ Intrauterine blood transfusion is a high-tech method of correction of fetal anemia, performed by cordocentesis at 18-34 weeks of gestation in fetuses with anemia (about 1 050 USD);
- ☞ Treatment of mature and premature neonates and infants.

All procedures are conducted on up-to-date diagnostic equipment with application of the latest methods of anesthesia.





## Leading Medical Centers of Belarus



### State institution «CentreKurort» Is the leading information and organization resource in the sphere of medical tourism in Belarus

- ✓ Consulting by competent specialists;
- ✓ Selection of a medical institution in accordance with the requirements (diagnosis, wishes and financial capacity of the patient);
- ✓ Coordination of individual diagnostic and treatment program of a patient with the responsible representative of the medical institution;
- ✓ Organization of rehabilitation according to an individual program after a course of basic treatment;
- ✓ Accompanying a patient during the entire stay in Belarus;
- ✓ Assistance in dealing with any administrative and nonstandard tasks;
- ✓ Extra services (transportation, accommodation, accompanying, visa support, etc.).

**clinicbel.com** 



Miasnikova str., 39,  
Minsk, 220048,  
Republic of Belarus,  
office 345

тел: +375 17 200-11-88, +375 44 558-72-16

e-mail: [medtour@ck.by](mailto:medtour@ck.by)

skype: clinicbel

[www.clinicbel.com](http://www.clinicbel.com)